



Painters Pipeline - Issue 5 - June 2020

TABLE OF CONTENTS

Message from the
Office Manager

Member Social
Media Competition

Swiftscuff -
Engineered Scaffold
Solutions

Lead Paint and
Asbestos Course

Managing the Risk of
Exposure to
Coronavirus

Message from the Office Manager

Once again thank you to all those members who have paid their fees and sent back their update forms. Please remember to include in the reference, the invoice number or business name when transferring fees through the banking system. A reminder also that if you pay prior to 30th June, 2020, membership will be for 13 months.

We should receive new membership cards within the next week. We will be sending all paid up members a membership card and supply of stickers and for the first 50 members that have paid a gift.

By the end of next week, we will have completed the members area of the website which will include employment templates, policies, SWMS, lead procedures etc so I encourage you to log in and use these documents.

Covid - 19 Update -
Easing of
Restrictions

Also when calling the office, if the call goes through to voicemail, please leave a message and we will get back to you as soon as possible.

Regards

Jodie Rebbechi



Social Media Competition for Members

We are holding a social media competition for our members on Facebook and Instagram. All members who send in pictures and/or video of yourself working on site will go into the draw to win a \$200 Render Tech voucher from Haymes. We will also post your photos or videos on Facebook and or Instagram with positive comments and tag you in those posts. This gives your business more exposure and support from the MPA.



We would also like to hear from our members some of the reasons you are a Member of the Master Painters Association and the benefits you receive from being a Member.

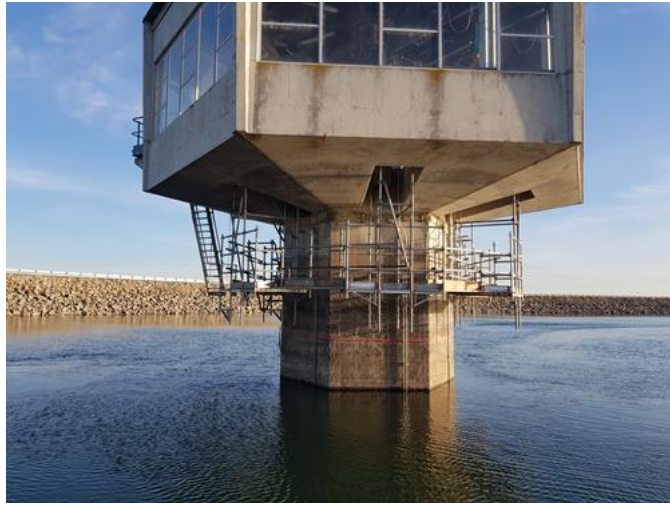
Help us help you!

Send your photos and videos to admin@mpav.com.au and remember to include your tags.



Swiftscaff

Got a difficult access project? Why not give Paul Houghton at Swiftscaff a call on 0418 502 442.



Lead Paint and Asbestos Course.

Interested in participating in the Lead Paint and Asbestos Course. We are taking expressions of interest. [Click here to register.](#)



Worksafe Update

Worksafe Victoria has published "Managing the risk of exposure to Coronavirus A simplified checklist for the construction industry. The [Checklist](#) is interactive allowing the audience to tick the boxes online.

Restrictions Easing



From 22nd June, Cafes, Restaurants and hospitality businesses will be allowed up to 50 patrons. Groups of us to 20 people will be allowed to dine and drink together at a table.

In additional alcohol will be able to be served without a meal but only when patrons are seated.

Auction houses may have up to 50 customers and real estate auctions and inspections can take place with up to 50 people.

If staff have been working from home, they must continue to do so. Employers must support their staff to work from home if they can.



Thank you to our major sponsors for all their support and assistance.



Master Painters Association of Victoria and Tasmania
56 - 58 Gaine Road
DANDENONG SOUTH VIC 3175



[Preferences](#) | [Unsubscribe](#)